

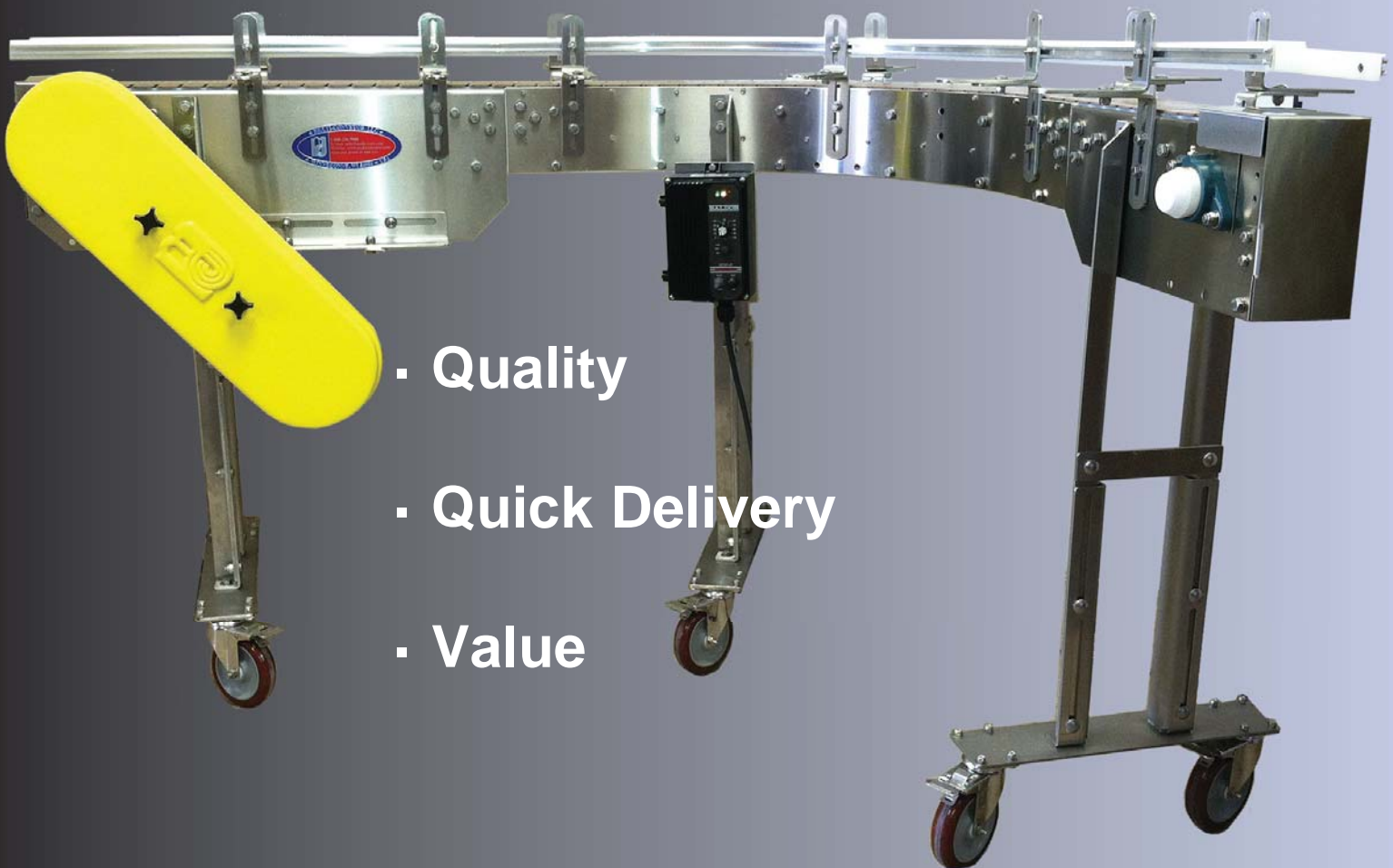


Multi-Conveyor LLC

Your best, conveyed better.

SUCCESS LINE

Quick Ship Conveyors Catalog



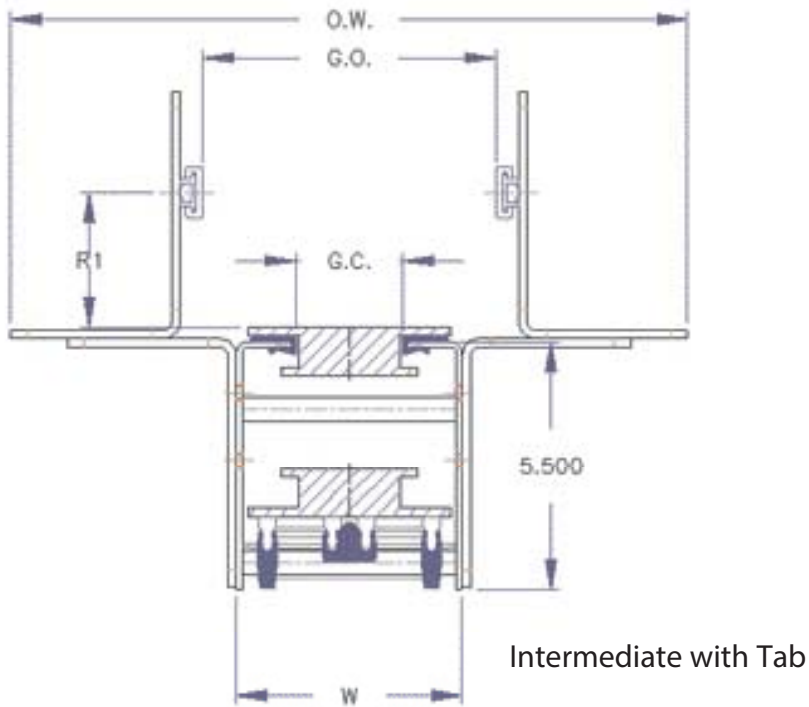
25 Windustrial Road • PO Box 10 • Winneconne, Wisconsin 54986 • Phone (920) 582-7960 • Fax (920) 582-7952

Toll Free: 1-800-236-7960

www.multi-conveyor.com

TABLE OF CONTENTS

CROSS SECTIONS	1
INTERMEDIATE SECTIONS	2
TAB CHAIN CURVE SECTIONS	3
PARALLEL TRANSFERS	4
IDLE END ASSEMBLIES	5
DRIVE END ASSEMBLIES	6
SUPPORTS	7
MOTORS/REDUCERS	7
CHAINS	7
HORSEPOWER & CHAIN PULL CALCULATIONS	9-10
GENERAL SPECIFICATIONS	11
SPECIALS and NON-STANDARD CONVEYORS REQUESTS	11
CALL TO ORDER	1-800-236-7960

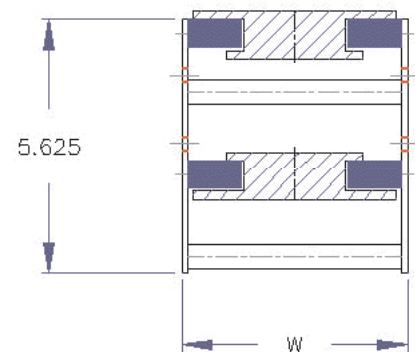


SUCCESS LINE of conveyors are fabricated from durable eleven gauge carbon or stainless steel. Wearstrips are UHMW plastic clip-on with a serpentine return surface. Guiderails are adjustable with UHMW plastic covers. The conveyor chain is the industry standard TAB flex chain.

Our models offer chain widths from 3.25" wide through 12" wide and rail openings from 0.1" through 14.9".

Model	W	G.C.	R1-min	R2-max	G.O.-min	G.O.-max	O.W.-min	O.W.-max
325	3.75"	1.75"	.875"	4.50"	0.0"	6.18"	10.75"	14.75"
450	5.0"	2.375"	.875"	4.50"	0.0"	7.4"	12.0"	16.0"
750	8.0"	2.375"	.875"	4.50"	2.75"	10.4"	15.0"	19.0"
1000	10.5"	2.375"	.875"	4.50"	5.25"	12.9"	17.5"	21.5"
1200	12.5"	2.375"	.875"	4.50"	7.25"	14.9"	19.5"	23.5"

SUCCESS LINE curves are constructed with UHMW plastic bar on the outside of the radius and oil-filled UHMW plastic bar on the inside of the radius to ensure maximum lubrication in this high friction area of the curve.

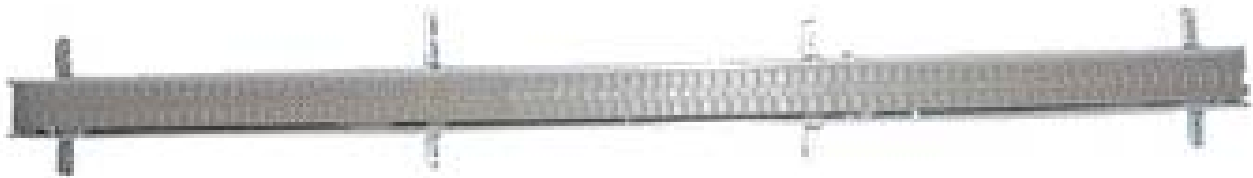


Curve with Tab Chain (w/o Guiderail)

An **INTERMEDIATE SECTION** is a straight section of a conveyor that transports the product from the idle end of the conveyor to the drive end of the conveyor.

SPECIFICATIONS

- 5.5" Deep conveyor frame
- UHMW plastic wearstrip
- Serpentine return
- Adjustable guiderail (*specifications below.)
- 11 gauge carbon steel or 304 stainless steel
- Available in increments of 1 foot



Available in Models	325	450	750	1000	1200
Chain Width	3.25"	4.50"	7.50"	10"	12"
Chain Type	LF880TAB K3.25"	LF882TAB K4.50"	LF882TAB K7.50"	LF882TAB K10"	LF882TAB K12"

Each **SUCCESS** intermediate section ships fully assembled and comes complete with the following components:

- Frame, up to 10' long in 12" increments
- Wearstrip, UHMW clip-on on the carry and UHMW serpentine for the return
- Adjustable guiderail brackets, brackets on each side of the conveyor
- Adjustable guiderail on each side of the conveyor, UHMW covered aluminum
- Tabletop chain, LF880 or LF882 tabletop chain
- Two splice plates at one end of frame

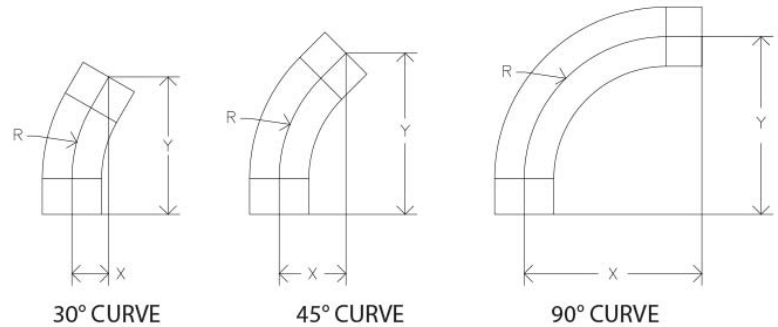
*Adjustable Guiderail Standards: Single/Double High Extruded Aluminum (w/ UHMW Cover), VG-SSRS, VG-SSMS, VG-SSTS-1.00, VG-SSTS-2.25 Guide Rail

TAB CHAIN CURVES allow your product to change its direction of travel with a continuous motion. The sideflexing tab chain is captured within the wearstrips thus allowing the change of direction without the chain lifting out of the wear surface.

We offer our **SUCCESS LINE** tab chain standard curves in a 24" radius with 6" ends at 30°, 45° and 90° segments.

SPECIFICATIONS

- Frames, 11 gauge carbon steel or 304 stainless steel
- UHMW wearstrips
- Oil filled UHMW on inside of curve
- 5.5" deep frame
- 6" long tangents on each end
- Radius measured to centerline of chain track
- Adjustable guiderail (*see page 2 for specifications)
- Open-top design



Model	RADIUS	30 DEG		45 DEG		90 DEG	
	R	X	Y	X	Y	X	Y
325	18"	6.215"	23.134	11.27"	27.21"	30.0"	30.0"
450	24"	6.215"	23.134	11.27"	27.21"	30.0"	30.0"
750	24"	6.215"	23.134	11.27"	27.21"	30.0"	30.0"
1000	24"	6.215"	23.134	11.27"	27.21"	30.0"	30.0"
1200	24"	6.215"	23.134	11.27"	27.21"	30.0"	30.0"

Each CURVE ships fully assembled complete with the following components:

- Frame, carbon steel or stainless steel
- Wearstrips (oil filled UHMW on the inside of the radius)
- Adjustable guiderail and three sets of adjustable brackets on each side of the conveyor
- LF880 or LF882 tabletop chain (footage is dependent on radius and degree of each curve)

Available in Models	325	450	750	1000	1200
Chain Width	3.25"	4.50"	7.50"	10"	12"
Chain Type	LF880TAB K3.25"	LF882TAB K4.50"	LF882TAB K7.50"	LF882TAB K10"	LF882TAB K12"

A **PARALLEL TRANSFER** ensures a smooth product transfer from one conveyor to another conveyor. The product is transferred passively by following a guiderail that is mounted diagonally over two tracks of conveyor chain. A **PARALLEL TRANSFER** is often used because the size of the product prohibits end to end transfer. It may also be used as a means of lessening back pressure and for better line control. Product spacing can be achieved by speeding up the line that the product is being transferred onto.



SPECIFICATIONS

- 10" deep frames
- Frames, 11 gauge carbon steel or stainless steel
- Roller chain drive
- UHMW wearstrips
- Adjustable guiderail (*see page 2 for specifications)
- Open-top design
- Minimal gap between chains

Available in Models	325	450	750	1000	1200
Chain Width	3.25"	4.50"	7.50"	10"	12"
Chain Type	LF880TAB K3.25"	LF882TAB K4.50"	LF882TAB K7.50"	LF882TAB K10"	LF882TAB K12"

Each **PARALLEL TRANSFER** ships fully assembled complete with all of the following components:

- Frames
- Wearstrips
- Guiderails
- Tabletop chain
- Motor/reducer, shaft motor mount
- End cap and finger guard
- Supports, carbon steel angle standard supports

The **IDLE END** of the conveyor is the beginning point of the carry portion of a conveyor. At this point the conveyor chain will make its first contact with your product.



SPECIFICATIONS

- Frames, 11 gauge carbon steel or stainless steel
- 1'-6" overall length
- 8" deep frame
- Stainless steel finger guard included
- TG&P or 304 stainless shaft
- 2-bolt, 1" bore bearings
- 3' 6" of tabletop chain
- 12-tooth tabletop sprocket

Each **IDLE END** ships fully assembled complete with the following components:

- Carbon steel or stainless steel frame
- Wearstrips
- Adjustable guiderail (*see Page 2 for specifications)
- One set of adjustable guiderail brackets on each side of the conveyor
- 3.25' of LF880 or LF882 tabletop chain
- (1) twelve-tooth tabletop sprocket
- (2) two-bolt bearings
- Idle shaft, TG&P or 304 stainless
- (2) stainless steel finger guards
- (1) formed angle, adjustable foot support
- Optional dead plate or end cap available upon request

Available in Models	325	450	750	1000	1200
Chain Width	3.25"	4.50"	7.50"	10"	12"
Chain Type	LF880TAB K3.25"	LF882TAB K4.50"	LF882TAB K7.50"	LF882TAB K10"	LF882TAB K12"

The **DRIVE END** is the termination point of a conveyor from which the conveyor chain is pulled towards it. This end is where the motor and gearbox are located.

SPECIFICATIONS

- Frames, 11 gauge carbon steel or stainless steel
- 2' 6" overall length
- 10" deep frame
- Stainless steel finger guard included
- TG&P or 304 shaft
- 2-bolt, 1" bore bearings
- (1) twelve-tooth tabletop sprocket
- (1) formed angle, adjustable foot support
- Standard shaft motor mount



Each standard **DRIVE END** ships fully assembled complete with the following components:

- Frames, carbon steel or stainless steel
- Wearstrips
- Adjustable guiderail and one set of adjustable brackets for each side of the conveyor
- 5' 6" of LF880 or LF882 tabletop chain
- (1) twelve-tooth tabletop sprocket
- Motor, AC up to 1.5 horsepower and a 133 to 300 size case speed reducer
- Drive shaft, TG&P or 304 stainless
- Shaft motor mount
- Optional dead plate or end cap available upon request

Available in Models	325	450	750	1000	1200
Chain Width	3.25"	4.50"	7.50"	10"	12"
Chain Type	LF880TAB K3.25"	LF882TAB K4.50"	LF882TAB K7.50"	LF882TAB K10"	LF882TAB K12"

SUCCESS LINE comes standard with adjustable "H" style SUPPORTS fabricated from formed angle. The "H" style is fabricated from 3/16" thick by 1.5" structural angle and is available in either painted carbon steel or 304 stainless steel. The Square Tube option uses articulated foot and NGI stainless steel. Standard height choice between 30" and 42" elevation from floor to top of the conveyor.

ANGLE SUPPORT SPECIFICATIONS

- 3/16" x 1.5" structured angle
- Stainless steel or painted carbon steel
- Adjustable foot

SQUARE TUBING OPTION

- 1.5" Square Tubing , SS NGI Articulated Foot

ELEVATION

- Between 30" and 42" (T.O.C.)



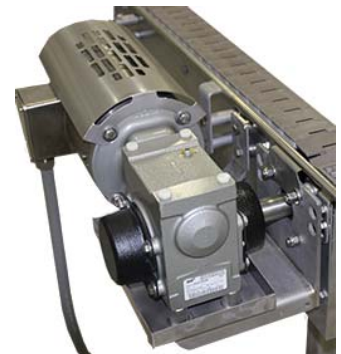
MOTORS/REDUCERS

MOTOR OPTIONS

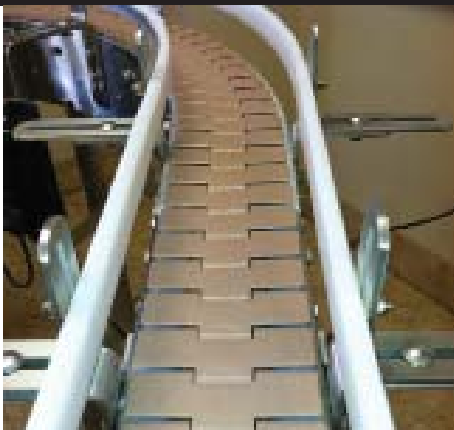
- 230/460/60/3 56-C flange
- 110/60/1 AC 56-C flange
- 90 Volt DC motor with Nema 4/12 controller (for 120 volt AC Input)
- 180 Volt DC motor with Nema 4/12 controller (for 240 volt AC Input)

FIXED SPEED MOTOR & REDUCER SETS

- Available in 60, 90 and 120 FPM
- Available in 1/2, 3/4, 1, and 1 1/2 HP



CONVEYOR CHAINS



All **SUCCESS LINE** chains are plastic side-flexing tabletop, acetal tab chains:

- LF880TAB-K3.25"
- LF882TAB-K4.50"
- LF882TAB-K7.50"
- LF882TAB-K10"
- LF882TAB-K12"

The calculation of **HORSEPOWER** and maximum **CHAIN PULL** are dependent on four factors:

- Conveyor speed
- Product weight
- Product slippage (accumulation)
- Starts per hour

The following procedures will allow you to calculate, under normal situations, the horsepower required for the conveyor.

FORMULA TO CALCULATE HORSEPOWER

$$HP = \frac{.75 \times \text{speed} \times \text{conveyor length} \times (WP + WC)}{33,000}$$

WP= weight of product per running foot of chain

WC= 2 x weight of chain per foot

The calculation for side flexing conveyor chains is somewhat more complex than it is for straight running conveyor chains. To determine the chain tension, you need to first determine the "G" factor.

PLF CHART

No. of starts per hour	Peak load factor
0	1
8	1.5
15	1.8
25	2

FORMULA TO CALCULATE THE "G" FACTOR

$$G = (WP + WC) \times PLF \times SP$$

WP = weight of product per running foot of chain

WC = 2 x weight of chain per foot

After calculating the "G" factor, refer to the chain tension chart, on the following page, to determine chain tension. Use the actual length of conveyor when using the chart to determine this value.

SIDEFLEXING CHAIN WEIGHTS

CHAIN	WEIGHT/FT. MAX
LF880TAB-K3.25	0.70
LF882TAB-K4.50	1.33
LF882TAB-K7.50	1.63
LF882TAB-K10	1.90
LF882TAB-K12	2.13

SP CHART (slippage factor) Percent of time product slips on chain

% of time	Slippage factor
0	1
15	1.4
30	1.5
50	1.6
75	1.7

CHAIN TENSION AT HEADSHAFT

Length in Feet	Factor G													
	4	6	8	10	15	20	25	30	35	40	45	50	55	60
10	19 9	25 13	32 17	39 20	56 29	73 48	90 48	107 57	124 66	141 76	158 85	175 94	192 103	209 113
15	27 13	36 19	48 25	59 30	85 45	111 59	137 73	163 87	190 101	216 115	242 129	268 143	294 158	320 172
20	36 18	50 25	64 33	78 41	114 60	149 79	184 98	220 117	255 136	291 155	326 174	361 193	397 212	432 231
25	44 22	62 32	80 41	96 51	143 75	187 99	232 123	276 146	321 170	366 194	410 218	455 242	499 266	544 290
30	53 26	75 38	96 50	118 61	171 90	225 119	279 147	333 176	387 205	440 234	494 263	548 291	602 320	349
35	62 31	87 44	112 58	137 71	200 105	263 139	326 172	389 206	452 240	515 273	578 307	341	374	408
40	70 35	99 51	128 66	157 81	229 120	301 159	374 197	446 236	518 274	590 313	351	390	429	467
45	79 36	111 57	144 74	176 92	258 135	339 176	421 222	502 266	584 309	352	396	439	483	526
50	87 44	124 63	160 82	196 102	287 150	377 199	468 247	559 295	344	392	440	489	537	585
60	104 52	148 76	192 99	235 122	344 180	454 239	563 297	355	413	471	529	587		
70	122 61	173 88	224 115	275 143	402 211	530 278	346	414	482	550	618			
80	139 70	197 101	255 132	314 163	460 241	606 318	396	474	552					
90	156 78	222 113	287 148	353 183	517 271	358	446	533	621					
100	173 87	246 126	319 165	392 204	575 301	398	496	593						

*top number is dry *bottom number is well lubricated

ACTUAL OUTPUT HP OF STANDARD MOTOR/REDUCER Output HP & Torque (inch pounds)

FPM	Ratio	RPM	1/2 HP		3/4 HP		1 HP		1 1/2 HP	
			HP	Torque	HP	Torque	HP	Torque	HP	Torque
150	10:1	175	.85	270	.85	270	1.13	361	1.67	534
120	15:1	116.7	.64	293	.86	392	1.27	583	1.69	790
90	20:1	87.5	.53	304	1.03	602	1.03	602	2	1178
60	30:1	58.3	.51	413	.76	615	1.42	1201	2	1705
30	50:1	35.0	.51	608	.95	1182	1.32	1662	1.75	2257

FRAMES:

11 gauge carbon steel or 11 gauge 304 stainless steel

FRAME DESIGN:

Inverted "L" Style, Open-Top Design
Intermediate Sections 5.5" Deep
10" Deep Drive and 8" Deep Idle Sections

WEARSTRIPS:

UHMW 1/8" Clip-On Top Wearstrips
UHMW, Standard Duty Serpentine Return

GUIDERAILS:

Single high extruded Aluminum with UHMW Flat-Faced Cover.

GUIDERAIL BRACKETS:

Formed Flat Bar, 3/16" x 1 1/2", Adjustable

SUPPORTS:

1.5" Structural Angle Adjustable "H" Style
1.5" Square Tubing, SS NGI Articulated Foot

MOTORS/REDUCERS:

Fixed Speed Motor and Reducer Sets
Fixed Speed AC, 230/460/60/3 with Right-Angle Reducers
Variable Speed – DC Motor and Variable Controller

CHAINS:

LF880TAB-K3.25"
LF882TAB-K4.50", K7.50", K10, and K12

To Order **SUCCESS LINE** Conveyors, Call (800) 236-7960.
Tell your sales account manager that you want “SUCCESS”.

SUCCESS LINE modules are sold in the following sizes and configurations:

PARALLEL TRANSFERS

- Available in 3.25”, 4.50”, 7.50”, 10” and 12” chain widths
- Available in 1/2, 3/4, 1 and 1 1/2 horsepower drive sizes
- Parallel Transfers are offered in speeds of 60, 90 and 120 feet per minute
- Ships fully assembled and ready to run

DRIVE MODULES

- Available in 3.25”, 4.50”, 7.50”, 10” and 12” chain widths
- Available in 1/2, 3/4, 1 and 1 1/2 horsepower
- Drive modules are offered in speeds of 60, 90 and 120 feet per minute
- Guarded roller chain drive is standard equipment

IDLE END MODULES

- Available in 3.25”, 4.50”, 7.50”, 10” and 12” chain widths
- Finger guard or end cap included

INTERMEDIATE CONVEYOR (STRAIGHT SECTIONS)

- Available in 3.25”, 4.50”, 7.50”, 10” and 12” chain widths
- Lengths available are one foot increments up to ten feet long

CURVE CONVEYOR (TURN SECTIONS)

- Available in 3.25”, 4.50”, 7.50”, 10” and 12” chain widths
- Available in radius, 24” x 30°, 24” x 45°, 24” x 90°
- 6” tangents on curve ends are standard

SPECIALS

- Stainless steel dead plate transitions
- LBP roller transitions
- Flush mounts
- Adjustable copes

NON-STANDARD CONVEYOR

This catalog contains information and pricing on the Multi-Conveyor **SUCCESS LINE** of standard conveyor. If you need a special conveyor that cannot be found in this catalog, or special modifications to **SUCCESS LINE** conveyor, then contact the SALES department at Multi-Conveyor for an individual quote that will be tailored to meet your needs.

SUCCESS CONVEYORS

OUR GOAL

MULTI-CONVEYOR designs and builds custom conveyors and related devices, and we are a leader in the industry for what we do.

That is not an opinion or a debate, it's simply a fact.

Our company motto is simply, "Your best, conveyed better."

We strive earnestly to achieve that goal through a process of continuous innovation. We have moved to a position of leadership in the industry because of that philosophy and for our new approaches to move, handle and reorientate our customer's products.

WHY SUCCESS?

Why SUCCESS indeed.

Many years ago, we found ourselves trying to fill quick deliveries for standard conveyors. However, on some occasions we could not fill those requests on a timely basis due to our current work load. As much as this is a great testimony to our full production schedule, these were not custom conveyors or specialized requests, just simple conveying solutions that we knew we should be able to provide quickly.

Knowing that our customers relied on our quality and reputation, we developed a line of pre-engineered conveyor components that could ship quickly when those requests are received. By pre-engineering and pre-fabricating the components for the Success Line conveyors, we save on both time and expense, which translates to "value-driven, quick ship" conveyors - hence, SUCCESS!



From your smart phone



Find us, Like us and Follow us soon on these channels!

